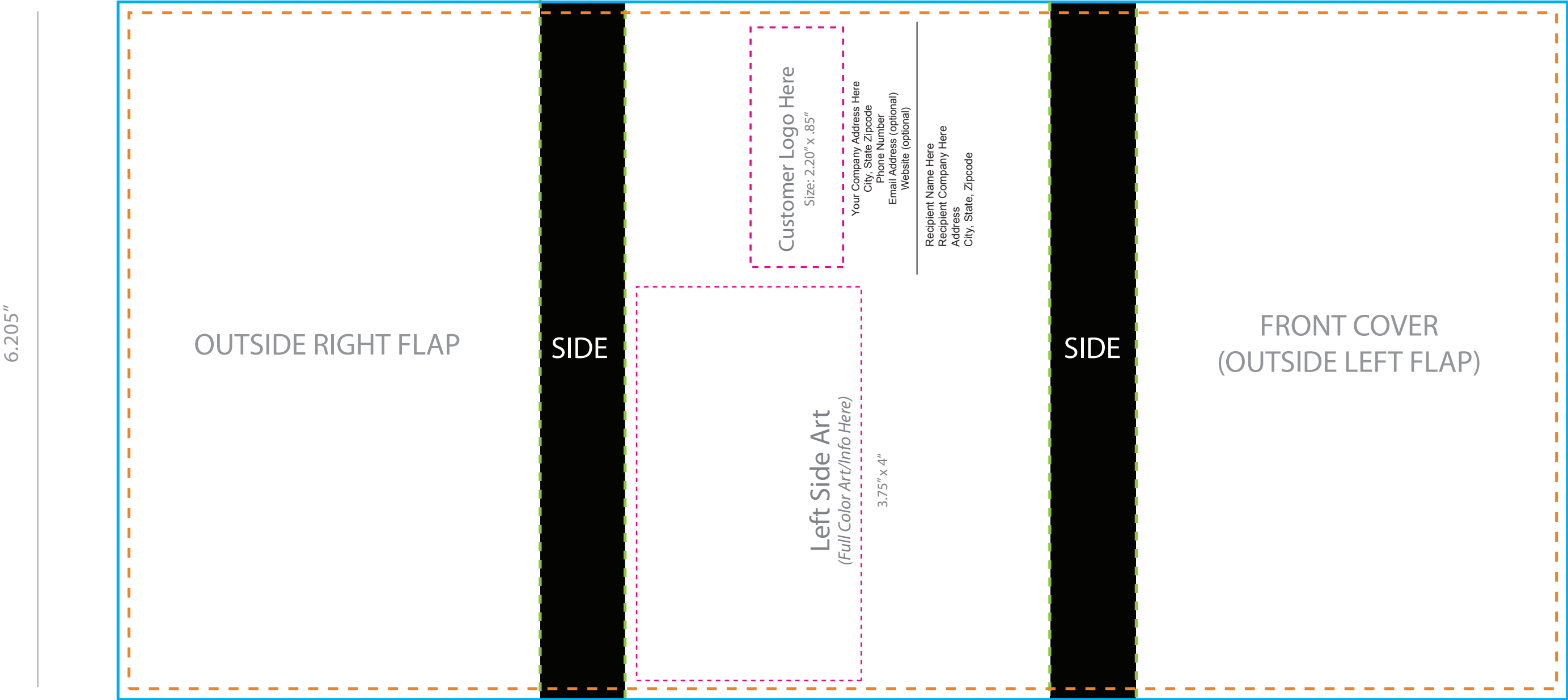


# Postcard Box Double Door (DD4)

**COMMENTS:**  
All raster-based artwork should be at least 300 dpi. When sending vector artwork (Adobe Illustrator, Corel Draw, Macromedia Freehand) please convert all type to paths or outlines or include the printer and screen font files.

- Bleed Line (13.316" w x 6.405" h)**  
All background artwork should extend to this line (0.1" outside the Die Line)
- Die Line (13.116" w x 6.205" h)**  
Final product will be cut down to this line
- Fold Lines**  
Where packaging will be folded.
- Recommended area for back art**

13.116"



# Postcard Box Double Door (DD4)

**COMMENTS:**

All raster-based artwork should be at least 300 dpi. When sending vector artwork (Adobe Illustrator, Corel Draw, Macromedia Freehand) please convert all type to paths or outlines or include the printer and screen font files.

- Bleed Line (14.66”w x 6.45”h)**  
All background artwork should extend to this line  
(0.1” outside the Die Line)
- Die Line (13.116”w x 6.205”h)**  
Final product will be cut down to this line
- Fold Lines**  
Where packaging will be folded.
- Recommended area for back art**

13.116”

