

# SPEARMINT CHEWING GUM SLEEVE TEMPLATE

**Bleed Line (4.27" w x 5.98" h)**

All background artwork should extend to this line (0.1" outside the Die Line)

**Die Line (4.07" w x 5.78" h)**

Visual Portion of what will show in chewing gum packaging.

**Safe Area (3.87" w x 5.58" h)**

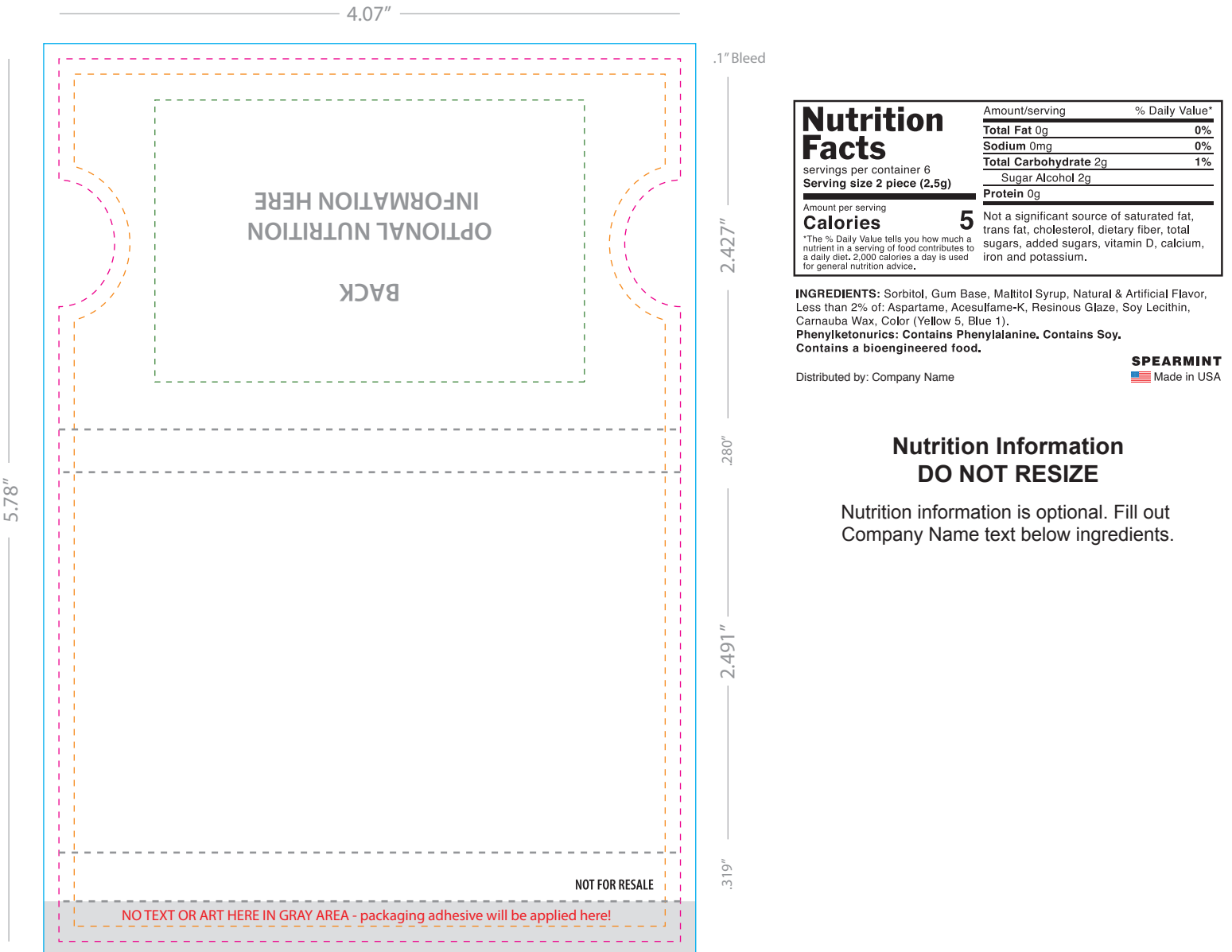
Keep all important text and logos inside this area.

**Fold Lines**

Shows where packaging will be folded.

**Nutrition Information**

Nutrition information is optional. Fill out Company Name text.



## COMMENTS:

Due to FDA regulation, "NOT FOR RESALE" must be printed on the gum package if nutrition information is not listed.

All raster-based artwork should be at least 300 dpi. When sending vector artwork (Adobe Illustrator, Corel Draw, Macromedia Freehand) please convert all type to paths or outlines or include the printer and screen font files.