

# Dual USB Charger White

———— **Bleed Line (1.06"w x .71"h)**

*All background artwork should extend to this line*

———— **Imprint Line (0.96"w x 0.61"h)**

*Visual Portion of what will show on USB*

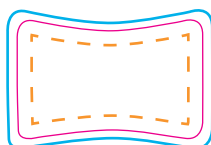
- - - - **Text Safe Area**

*All important text/logos/info need to stay inside this line*

## Full Color Imprint

0.96"w x 0.61"h

*All dimensions are actual size.*



USB Size:  
1.5" x 1" x 2.75"

## COMMENTS:

**Vector artwork preferred.** When sending vector artwork (Adobe Illustrator, Corel Draw, Macromedia Freehand) please convert all type to paths or outlines or include the printer and screen font files. If sending raster-based artwork, make sure all artwork is at least 300 dpi.