

PEPPERMINT CHEWING GUM SLEEVE TEMPLATE

Bleed Line (4.27" w x 5.98" h)

All background artwork should extend to this line (0.1" outside the Die Line)

Die Line (4.07" w x 5.78" h)

Visual Portion of what will show in chewing gum packaging.

Safe Area (3.87" w x 5.58" h)

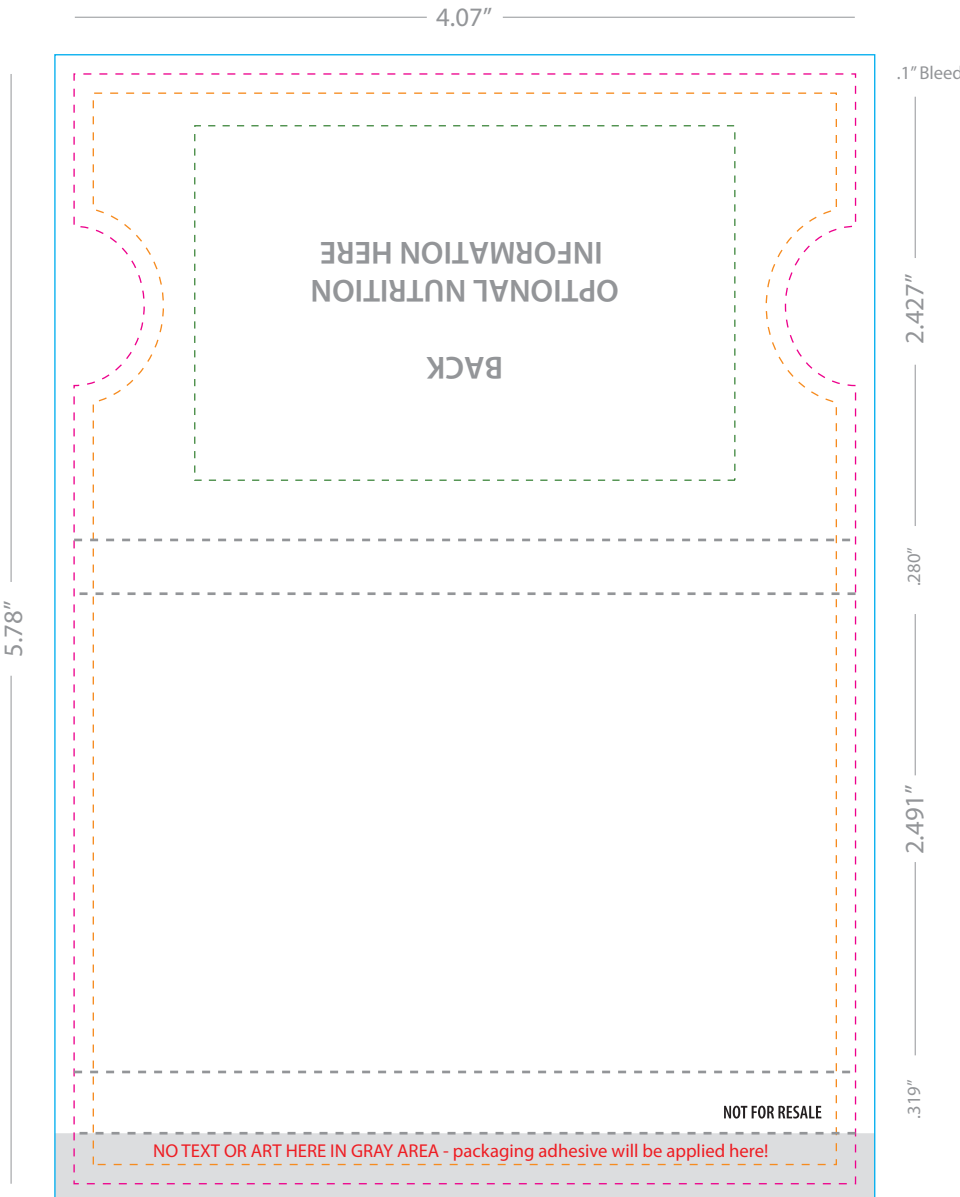
Keep all important text and logos inside this area.

Fold Lines

Shows where packaging will be folded.

Nutrition Information

Nutrition information is optional. Fill out Company Name text.



Nutrition Facts		Amount/serving	% Daily Value*
Total Fat 0g			0%
Sodium 0mg			0%
Total Carbohydrate 2g			1%
Dietary Fiber --g			0%
Sugar Alcohol 2g			
Protein 0g			

servings per container 6
Serving size 2 piece (2.5g)

Amount per serving
Calories 5

*The % Daily Value tells you how much a nutrient in a serving of food contributes to a daily diet. 2,000 calories a day is used for general nutrition advice.

Not a significant source of saturated fat, trans fat, cholesterol, dietary fiber, total sugars, added sugars, vitamin D, calcium, iron and potassium.

INGREDIENTS: Sorbitol, Maltitol, Gum Base, Maltitol Syrup, Natural & Artificial Flavor, Less than 2% of: Gum Arabic, Titanium Dioxide (color), Resinous Glaze, Aspartame, Acesulfame-K, Soy Lecithin and Carnauba Wax.
Phenylketonurics: Contains Phenylalanine, Contains Soy. Contains a bioengineered food.

Distributed by: Company Name

PEPPERMINT
Made in USA

Nutrition Information DO NOT RESIZE

Nutrition information is optional. Fill out Company Name text below ingredients.

COMMENTS:

Due to FDA regulation, "NOT FOR RESALE" must be printed on the gum package if nutrition information is not listed.

All raster-based artwork should be at least 300 dpi. When sending vector artwork (Adobe Illustrator, Corel Draw, Macromedia Freehand) please convert all type to paths or outlines or include the printer and screen font files.