

# Light-Up Fedora Band

## Full Color

— Bleed Line (FRONT: 13.68”w x 1.05”h, BACK: 10.6”w x 1.05”h)

*All background artwork should extend to this line*

— Imprint Line (FRONT: 13.48”w x .85”h, BACK: 10.4”w x .85”h)

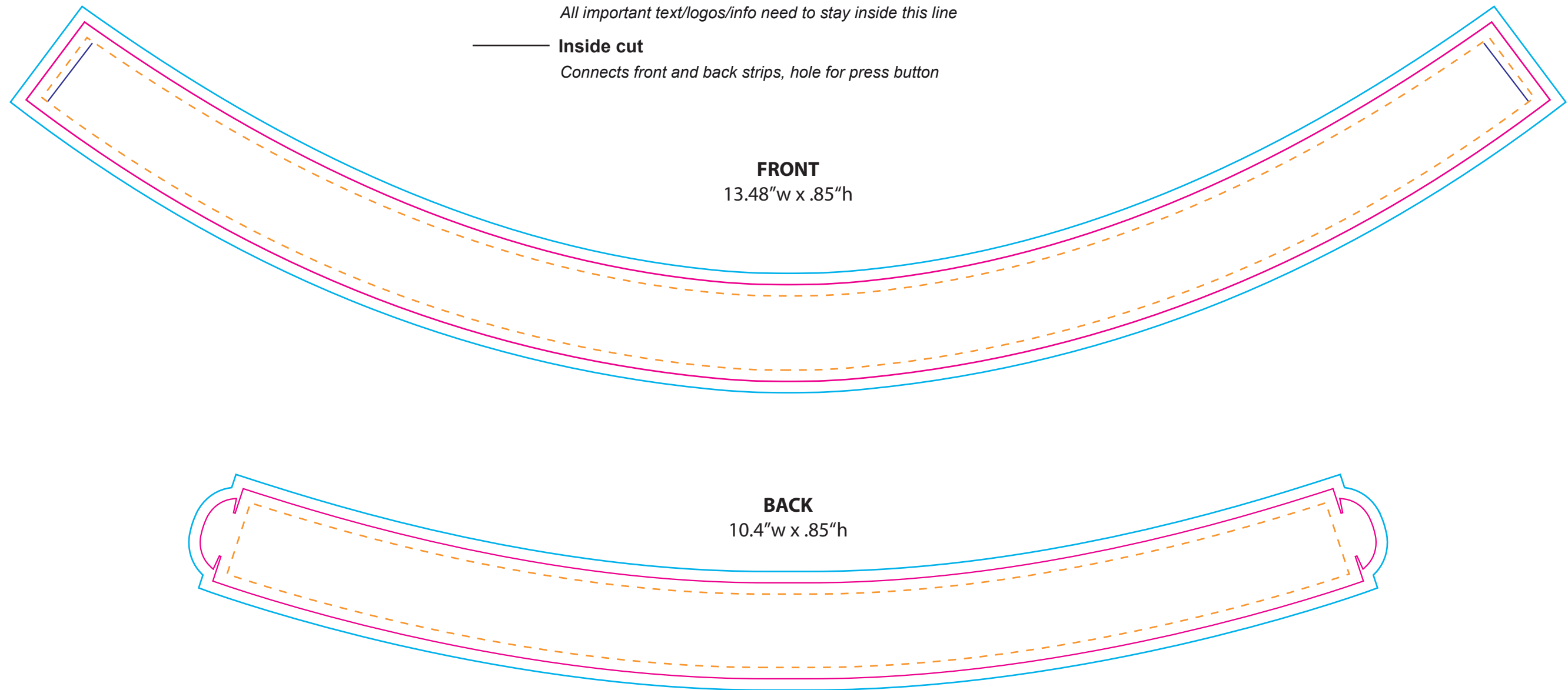
*Visual Portion of what will show on medallion*

- - - Text Safe Area

*All important text/logos/info need to stay inside this line*

— Inside cut

*Connects front and back strips, hole for press button*



### COMMENTS:

**Vector artwork preferred.** When sending vector artwork (Adobe Illustrator, Corel Draw, Macromedia Freehand) please convert all type to paths or outlines or include the printer and screen font files. If sending raster-based artwork, make sure all artwork is at least 300 dpi.