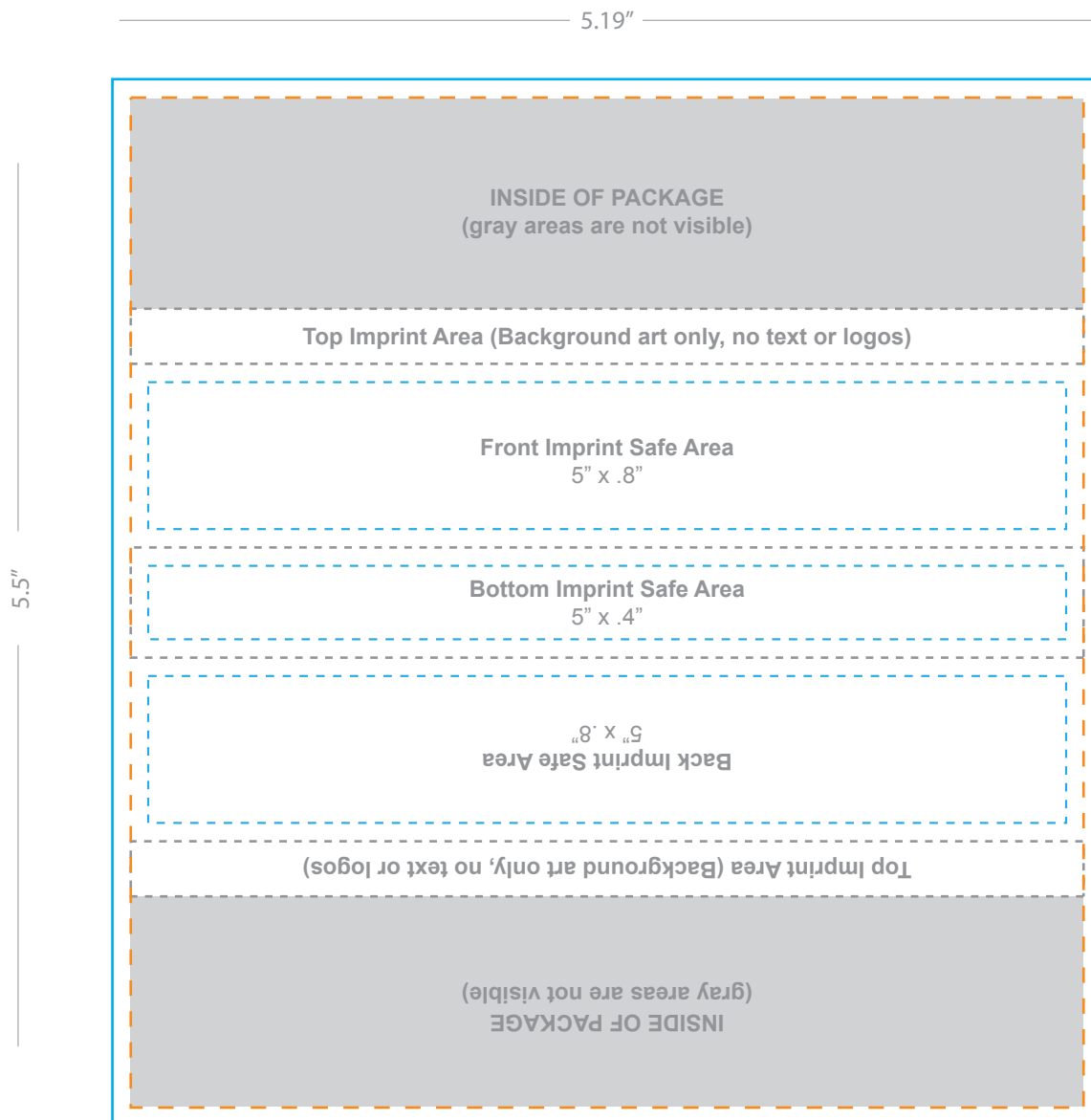


# Crystal Box Packaging For The Lightning Volt™

- Bleed Line (5.39" w x 5.7" h)**  
*All background artwork should extend to this line (0.1" outside the Die Line)*
- Die Line (5.19" w x 5.5" h)**  
*Visual Portion of what will show in Lightning Volt™ packaging.*
- Fold Lines**  
*Shows where packaging will be folded.*
- Safe Imprint Area**



## COMMENTS:

All raster-based artwork should be at least 300 dpi. When sending vector artwork (Adobe Illustrator, Corel Draw, Macromedia Freehand) please convert all type to paths or outlines or include the printer and screen font files.