

THE GLOW™ PACKAGE TEMPLATE

————— **Bleed Line (4.42”w x 5.52”h)**

All background artwork should extend to this line (0.1” outside the Die Line)

- - - - - **Die Line (4.21”w x 5.31”h)**

Visual Portion of what will show in Glow™ packaging.

- - - - - **Fold Lines**

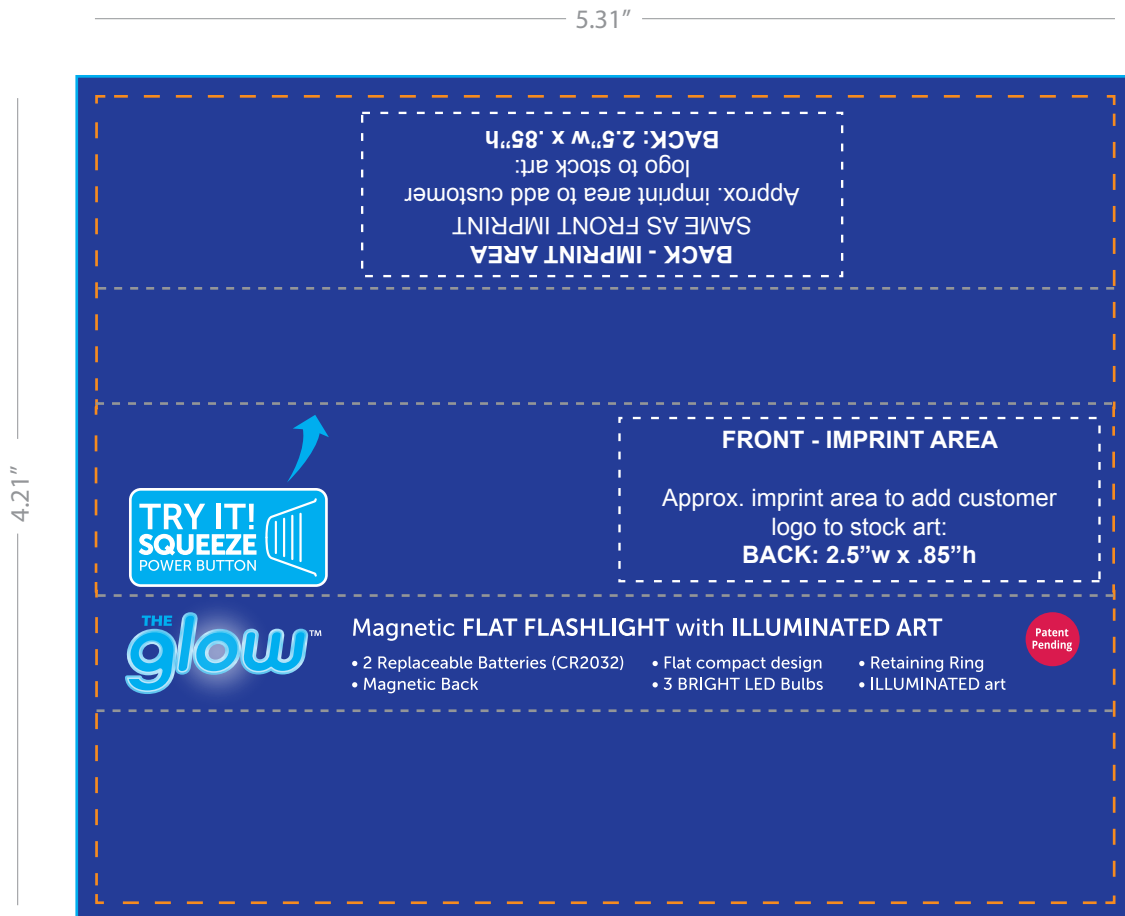
Shows where packaging will be folded.

- - - - - **Imprint area**

Custom artwork can be created in this area.

NOTE:

- Same imprint will be placed on front and back of insert.
- “Press Button” on front panel is required, however colors can be adjusted to match logo.
- Background color can change, but it must be a solid color.
- Side panel information is optional and can be removed



COMMENTS:

All raster-based artwork should be at least 300 dpi. When sending vector artwork (Adobe Illustrator, Corel Draw, Macromedia Freehand) please convert all type to paths or outlines or include the printer and screen font files.