





# Smart Power Bank

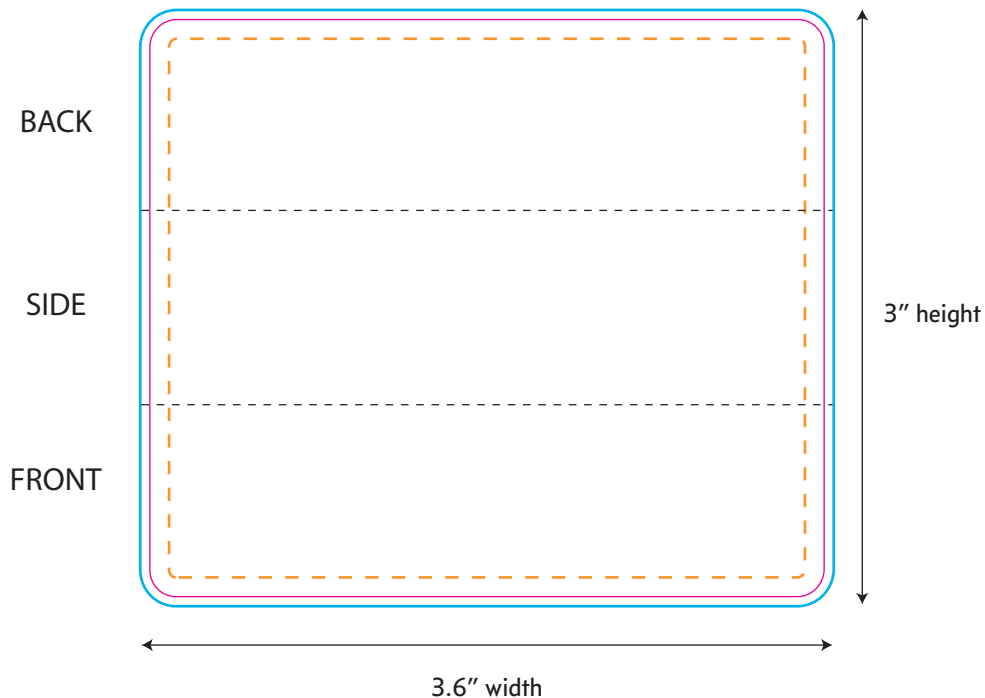
## 1046418

-  **Bleed Line (3.6"w x 3.1"h)**  
*All background artwork should extend to this line*
-  **Imprint Line (3.5"w x 3"h)**  
*Visual Portion of what will show on Power Bank*
-  **Text Safe Area**  
*All important text/logos/info need to stay inside this line*
-  **Fold Lines**

### Full Color Imprint

3.5"w x 3"h

*All dimensions are actual size.*



### COMMENTS:

**Vector artwork preferred.** When sending vector artwork (Adobe Illustrator, Corel Draw, Macromedia Freehand) please convert all type to paths or outlines or include the printer and screen font files. If sending raster-based artwork, make sure all artwork is at least 300 dpi.