



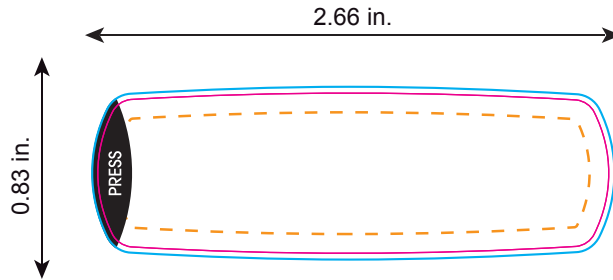
The Lightning Volt™

Full Color Appliqué

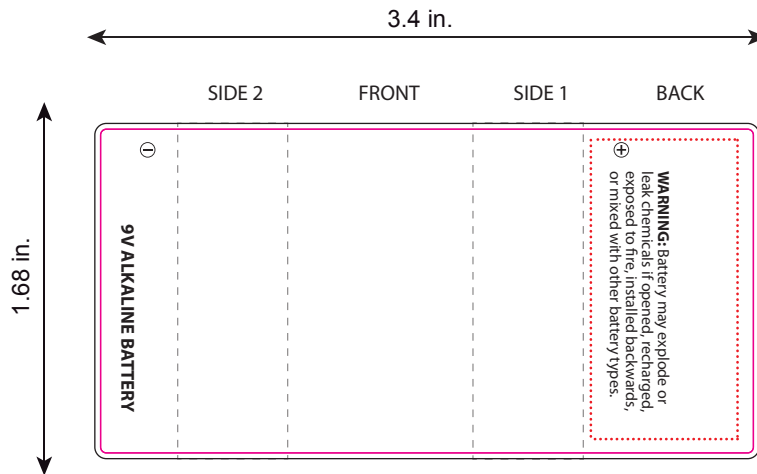
All dimensions are actual size.

- Bleed Line**
All full color background artwork should extend to this line (0.05" outside the Die Line)
- Die Line**
Actual appliqué shape
- Imprint Area**
All important text/logos/info need to stay inside this line (0.1" inside of the Die Line)
- Fold lines**
Shows where wrap will be folded

Inlay:



Battery Wrap:



Back side will be covered by flashlight when assembled. No art or logos here. background color/art ok.

Battery and warning information MUST be included (text color can be altered)

COMMENTS:

All raster-based artwork (JPEG, TIFF, EPS, PSD, etc.) should be at least 300 dpi. When sending vector artwork (Adobe Illustrator preferred when possible) please convert all type to paths or outlines or include the printer and screen font files.